

# On the cranial anatomy of the smallest insular hippopotamus (Cyprus, Pleistocene)

George Alexandrou LYRAS, Bartholomeus Gertrudis Maria VAN DER GEER, Michael  
Socrates KAFOUSIAS, Alexandra Anna Enrica VAN DER GEER

Supplementary Online Material  
BSPI 64 (1) - 2025

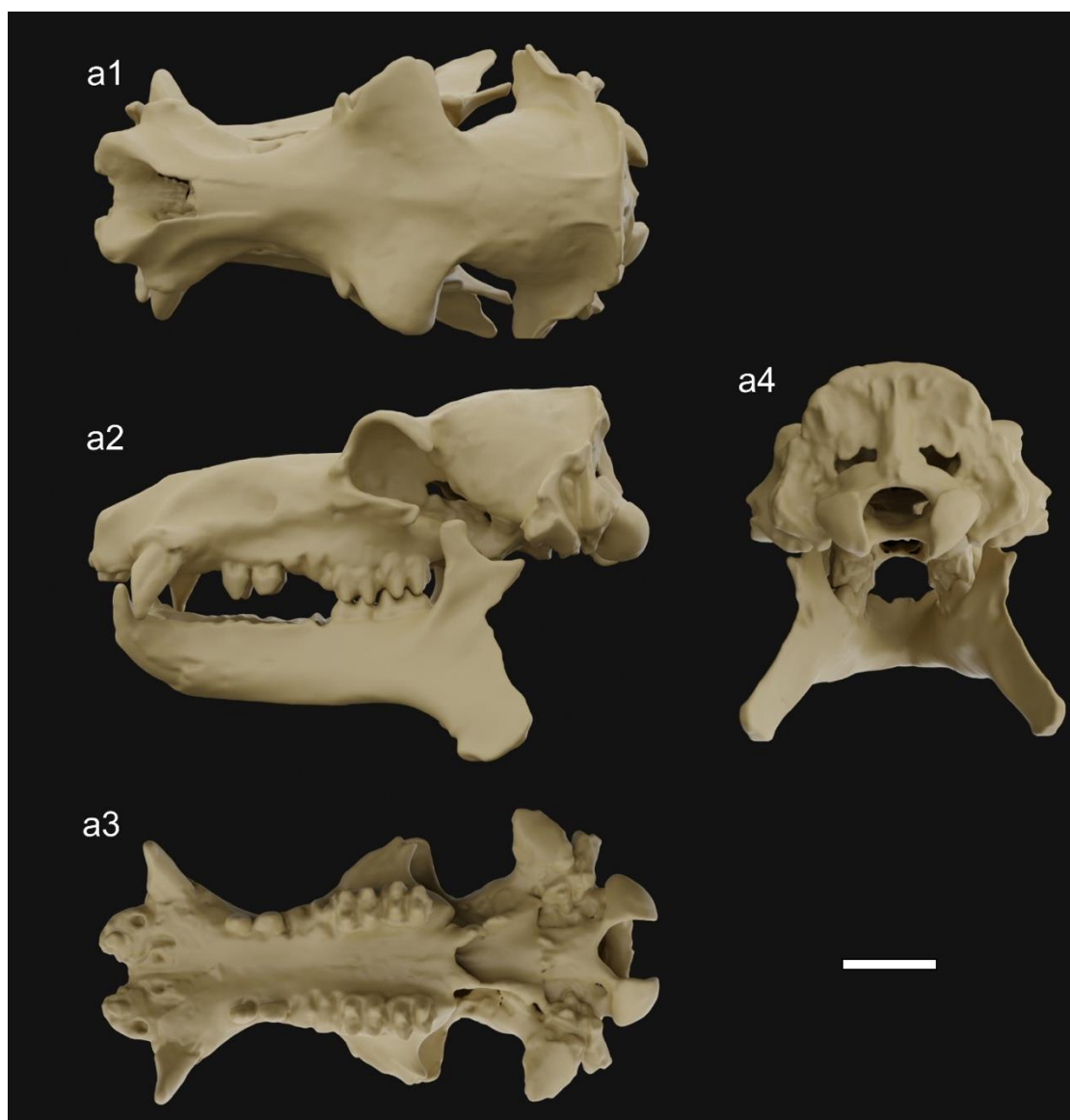


Fig. S1 - Virtual reconstruction of the Pleistocene dwarf hippopotamus of Cyprus, *Hippopotamus minor*, based on selected cranial and mandibular parts and fragments. a1) cranial view; a2) lateral view; a3) ventral view; a4) occipital view. Scale bar 5 cm.

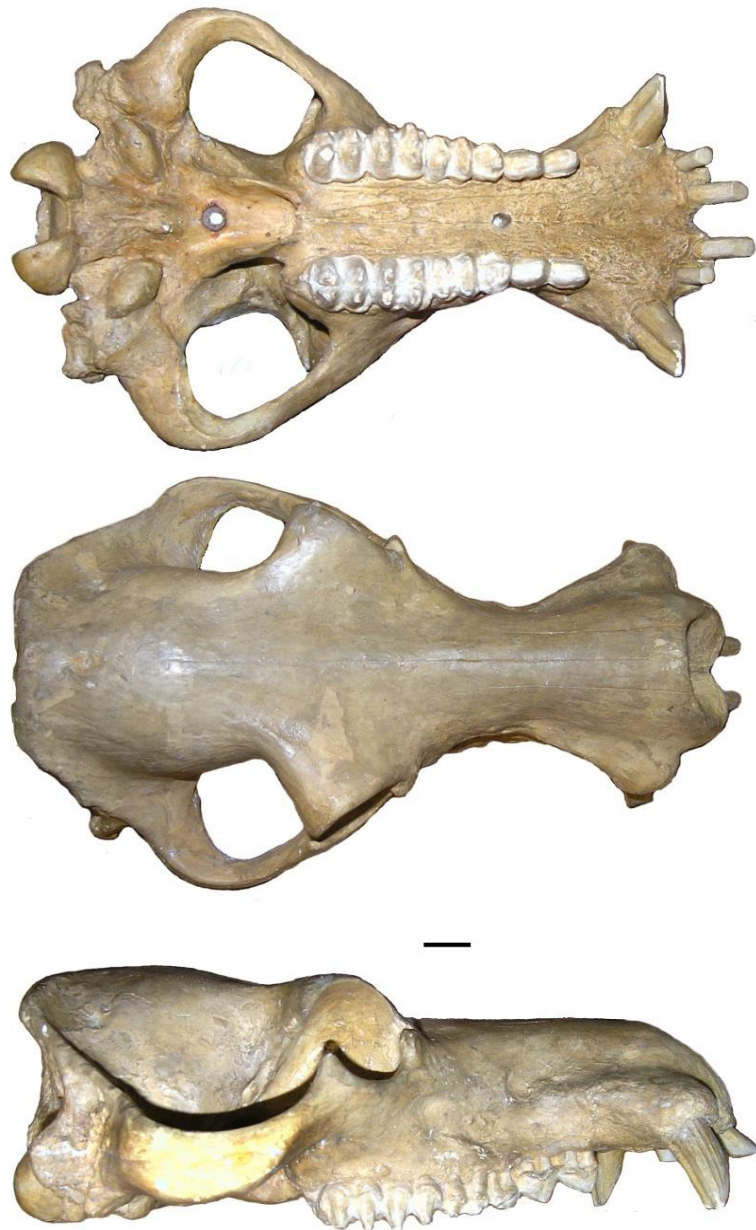


Fig. S2 - Plaster model of the skull created by F. O. Barlow at NHMUK, which was used in the mounted skeleton of *Hippopotamus minor* as depicted by Bate (1906). Scale bar 2 cm.

\*\*\*\*\*

SOM 2 - Movie of the virtual reconstruction of *Hippopotamus minor* with rotation around the vertical axis (yaw). For still images, see Fig. S1.

SOM 3 - Movie of the virtual reconstruction of *Hippopotamus minor* with rotation around the front-to-back axis (roll). For still images, see Fig. S1.